

# ACH Volume Increases 6.9 Percent in 1st Quarter 2017

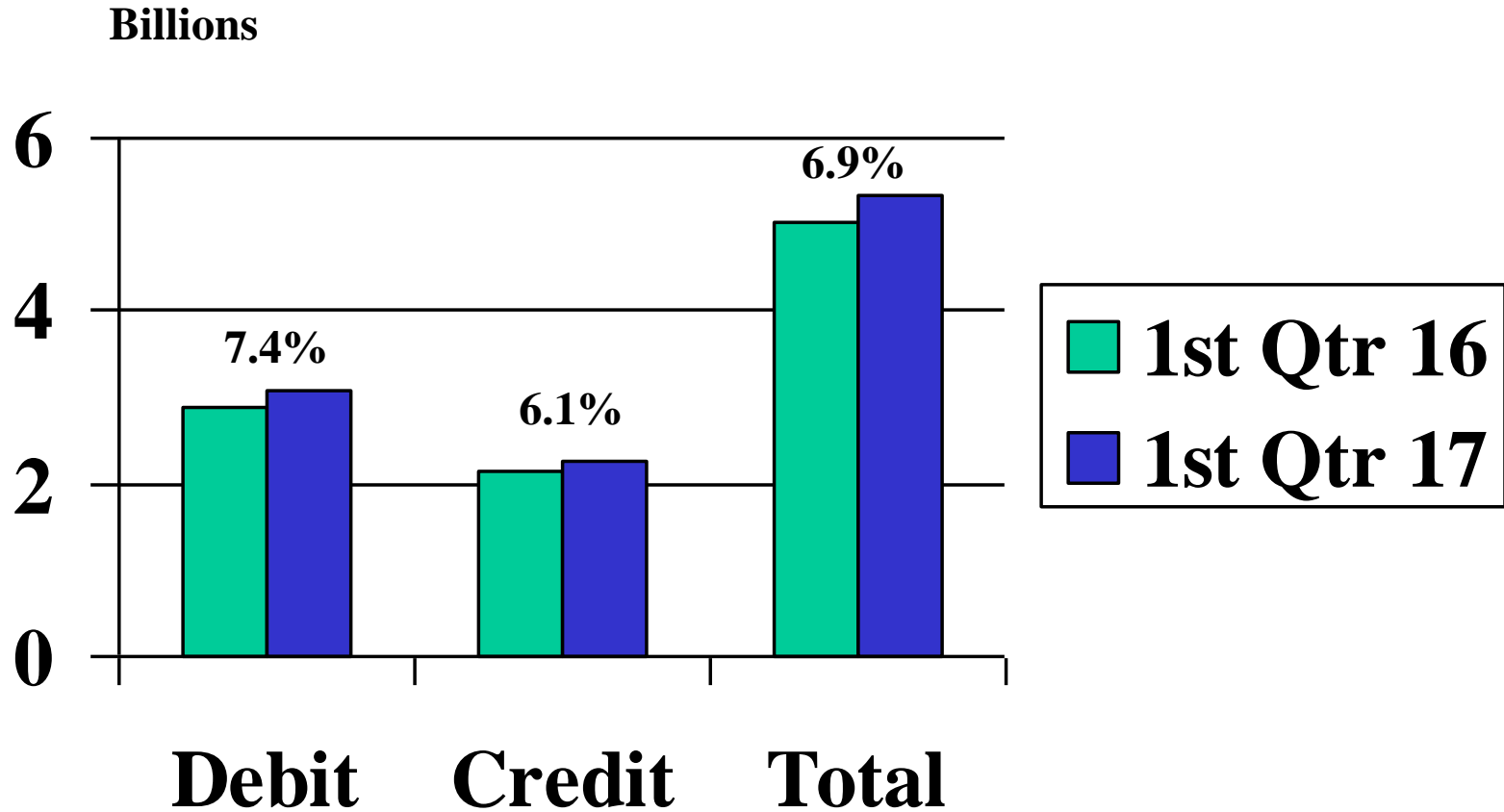
The Automated Clearing House Network grew by 6.9 percent in the 1st Quarter 2017 compared to a year ago, according to NACHA statistics. Approximately 5.35 billion transactions moving approximately \$11.5 trillion were conducted during the quarter. These figures represent changes of 6.9 percent and 8.2 percent, respectively, compared to the same quarter of 2016. There were 3.09 billion debits and 2.26 billion credits, for a total of 5.35 billion. The statistics include commercial inter-bank and government transactions, but not “on-us” transactions.

<b>1st Quarter 2017 ACH Network Transactions (does not include on-us volumes)</b>								
		<b>1st Q 2017</b>		<b>4th Q 2016</b>	<b>% change</b>		<b>1st Q 2016</b>	<b>% change</b>
ARC		322,435,406		320,936,996	0.47%		350,539,299	-8.02%
BOC		27,294,064		30,449,183	-10.36%		31,723,946	-13.96%
CCD Debits		255,119,536		247,322,615	3.15%		248,630,198	2.61%
CCD Credits		504,118,608		494,662,894	1.91%		479,479,474	5.14%
CIE		40,180,234		39,529,018	1.65%		41,218,471	-2.52%
CTX		28,509,210		28,053,151	1.63%		26,694,529	6.80%
IAT		21,901,814		22,607,598	-3.12%		19,285,165	13.57%
POP		58,302,568		66,417,580	-12.22%		66,140,922	-11.85%
PPD Debits		959,193,510		945,880,100	1.41%		903,775,758	6.13%
PPD Credits		1,653,747,553		1,543,086,359	7.17%		1,554,913,156	6.36%
RCK		536,024		641,723	-16.47%		660,890	-18.89%
TEL		135,925,396		130,086,979	4.49%		122,245,175	11.19%
WEB Debit		1,255,450,419		1,203,387,460	4.33%		1,083,560,187	15.86%
WEB Credit		23,097,871		20,651,062	11.85%		18,297,224	26.24%
Other		64,446,202		70,051,001	-8.00%		60,003,383	7.40%
<b>Total Network</b>		<b>5,350,258,415</b>		<b>5,163,763,719</b>	<b>3.61%</b>		<b>5,007,167,777</b>	<b>6.85%</b>

Source: NACHA - The Electronic Payments Association

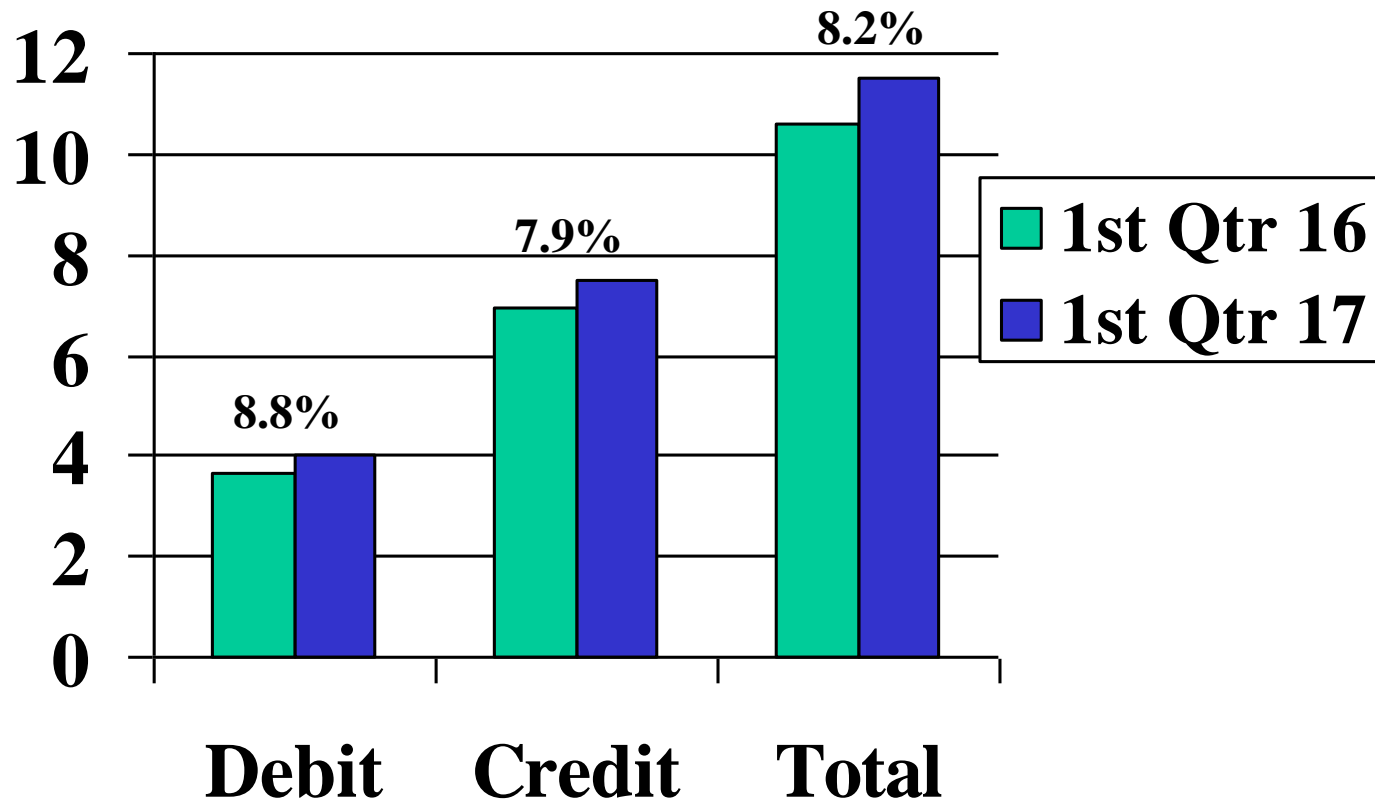
© 2017 NACHA - The Electronic Payments Association

# ACH Transaction Volume



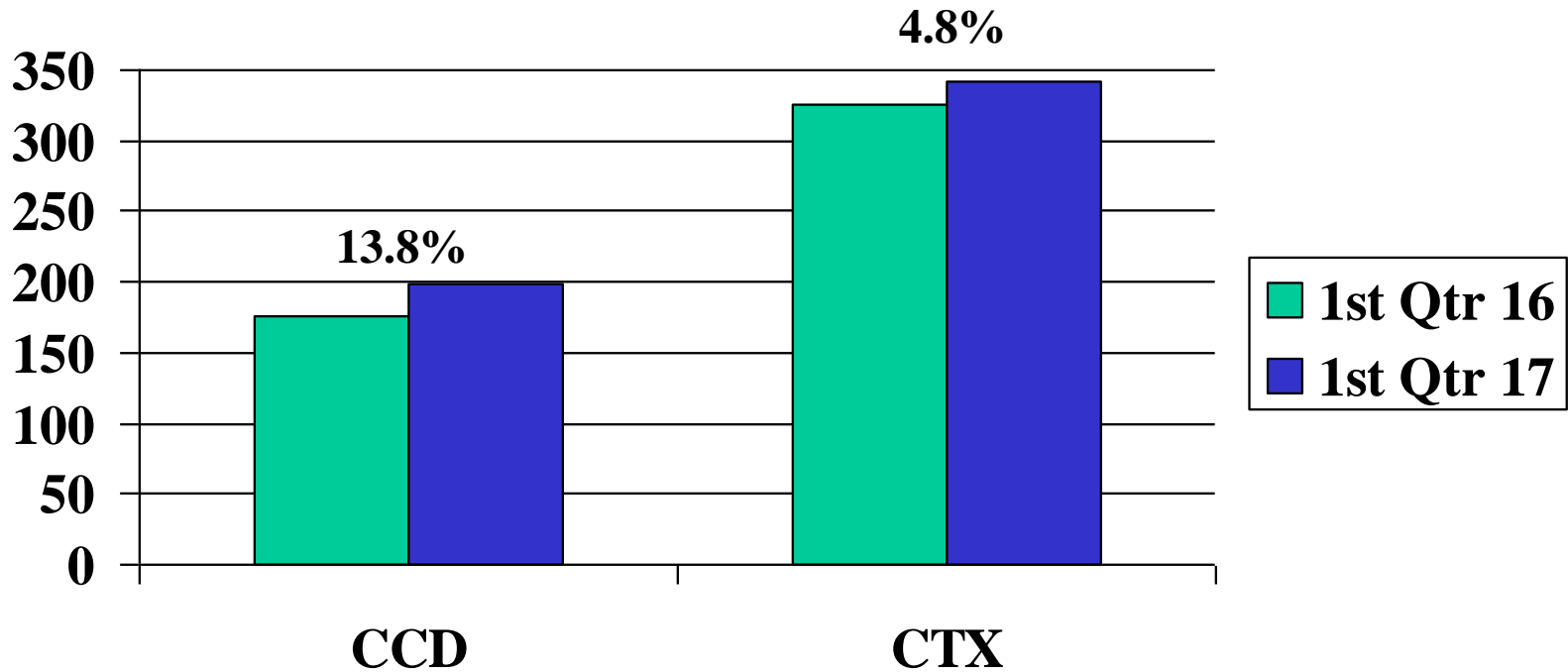
# ACH Dollar Volume

Trillions



# Financial EDI – EDI-Formatted Addenda Records

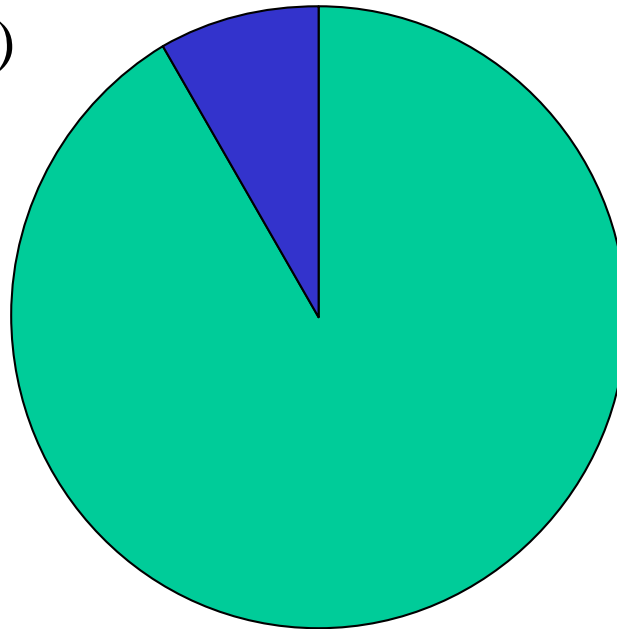
Millions



## ACH Transaction Volume – 1st Quarter 2017

447,604,758

(8.4%)



4,902,653,657

(91.6%)

# Commercial ACH Volume – 1st Quarter 2017

1,888,530,639  
(38.5%)

3,014,123,018  
(61.5%)

